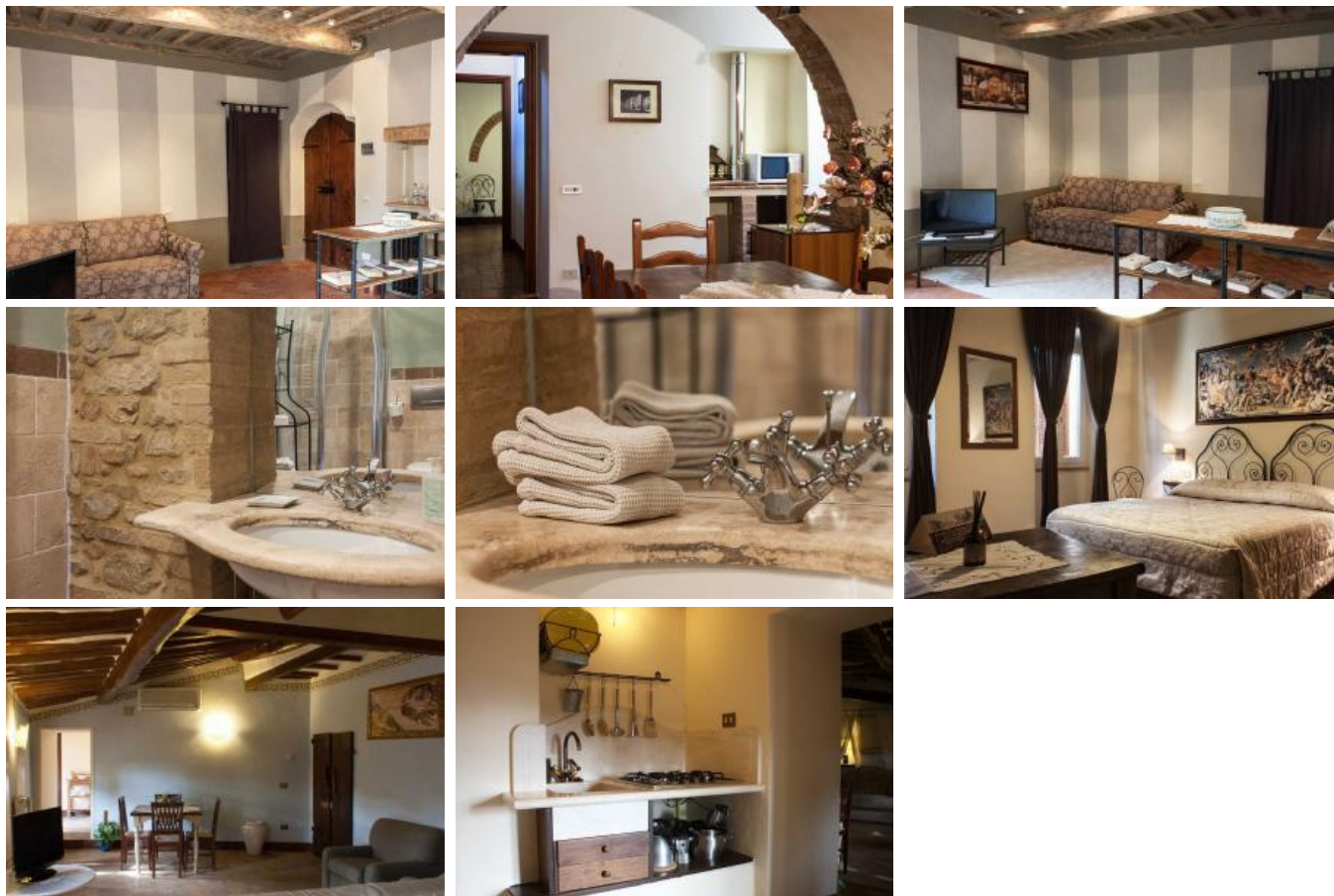


Anna B & B



Description

Just 50 meters far from the main **Hotel il Giglio**, in a narrow stone lane that climbs to the town's fortress,
is a **16th century** building known as "**Anna Camere**".

In the same building as "**Anna Camere**", just 50 meters far from the main **Hotel Il Giglio**, in the very heart of the town, a few **apartments** are available from **2** up to **6** people, in a very quiet location . What a better way to discover Tuscany ?

Rooms

Just 50 meters far from the main **Hotel il Giglio**, in a narrow stone lane that climbs to the town's fortress, is a **16th century** building known as "**Anna Camere**". **Double or single rooms**, each one with **bathroom + shower, hairdryer, and Tv** in a quiet and easy atmosphere. Anna's rooms are the perfect place for longer stays or for those who prefer independent accommodation to better enjoy the town's life..

In the same building as “**Anna Camere**” , just 50 meters far from the main **Hotel Il Giglio**, in the very heart of the town, a few **apartments** are available from **2** up to **6** people, in a very quiet location .

Only for you

If you book a holiday by our website www.winetravelsforyou.com, you will get a **discount of 10% in all our tours**